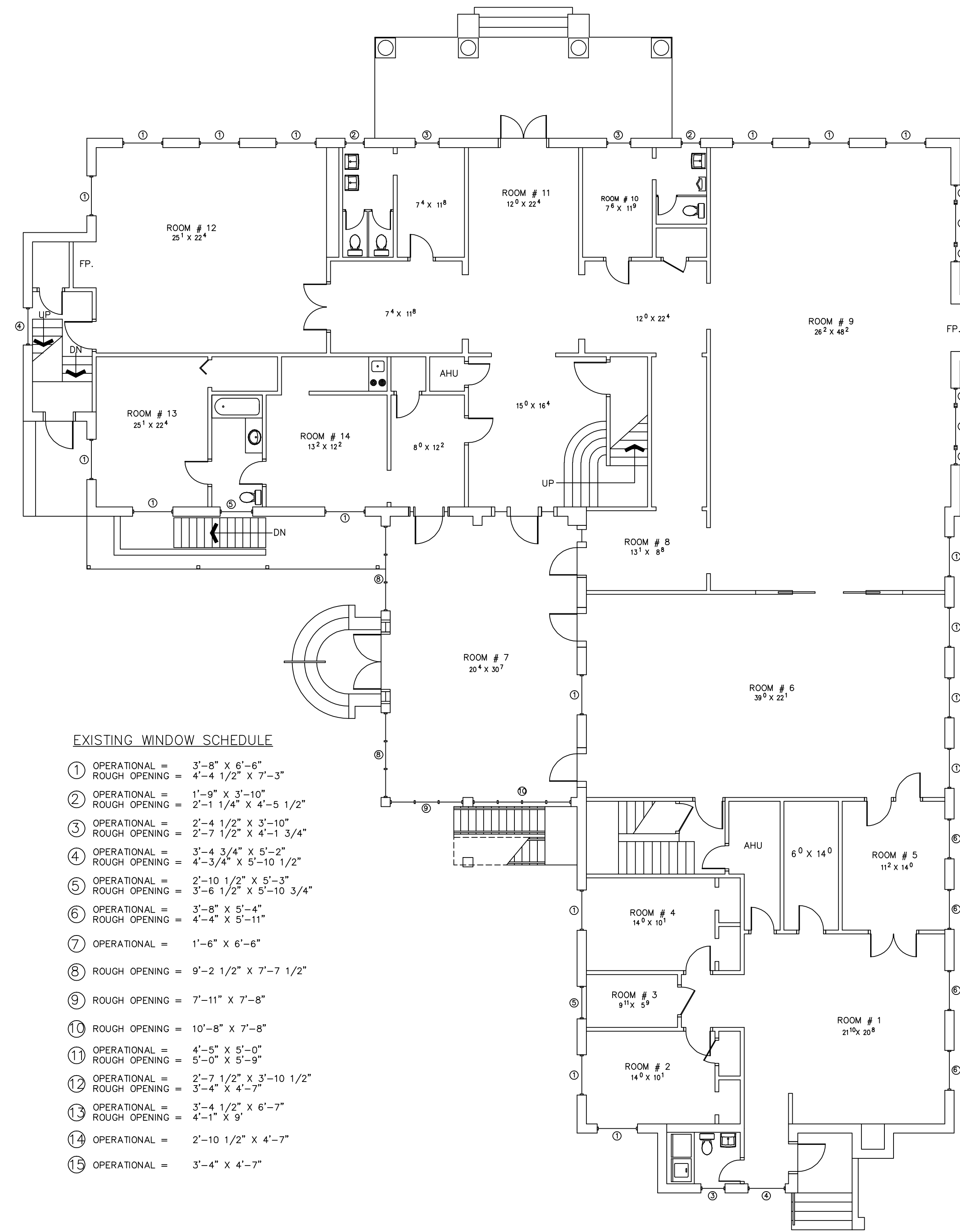


BASEMENT FLOOR PLAN 1/8"=1'-0"



EXISTING WINDOW SCHEDULE

- ① OPERATIONAL = 3'-8" X 6'-6"  
ROUGH OPENING = 4'-4 1/2" X 7'-3"
- ② OPERATIONAL = 1'-9" X 3'-10"  
ROUGH OPENING = 2'-1 1/4" X 4'-5 1/2"
- ③ OPERATIONAL = 2'-4 1/2" X 3'-10"  
ROUGH OPENING = 2'-7 1/2" X 4'-1 3/4"
- ④ OPERATIONAL = 3'-4 3/4" X 5'-2"  
ROUGH OPENING = 4'-3/4" X 5'-10 1/2"
- ⑤ OPERATIONAL = 2'-10 1/2" X 5'-3"  
ROUGH OPENING = 3'-6 1/2" X 5'-10 3/4"
- ⑥ OPERATIONAL = 3'-8" X 5'-4"  
ROUGH OPENING = 4'-4" X 5'-11"
- ⑦ OPERATIONAL = 1'-6" X 6'-6"
- ⑧ ROUGH OPENING = 9'-2 1/2" X 7'-7 1/2"
- ⑨ ROUGH OPENING = 7'-11" X 7'-8"
- ⑩ ROUGH OPENING = 10'-8" X 7'-8"
- ⑪ OPERATIONAL = 4'-5" X 5'-0"  
ROUGH OPENING = 5'-0" X 5'-9"
- ⑫ OPERATIONAL = 2'-7 1/2" X 3'-10 1/2"  
ROUGH OPENING = 3'-4" X 4'-7"
- ⑬ OPERATIONAL = 3'-4 1/2" X 6'-7"  
ROUGH OPENING = 4'-1" X 9"
- ⑭ OPERATIONAL = 2'-10 1/2" X 4'-7"
- ⑮ OPERATIONAL = 3'-4" X 4'-7"

FIRST FLOOR PLAN 1/8"=1'-0"

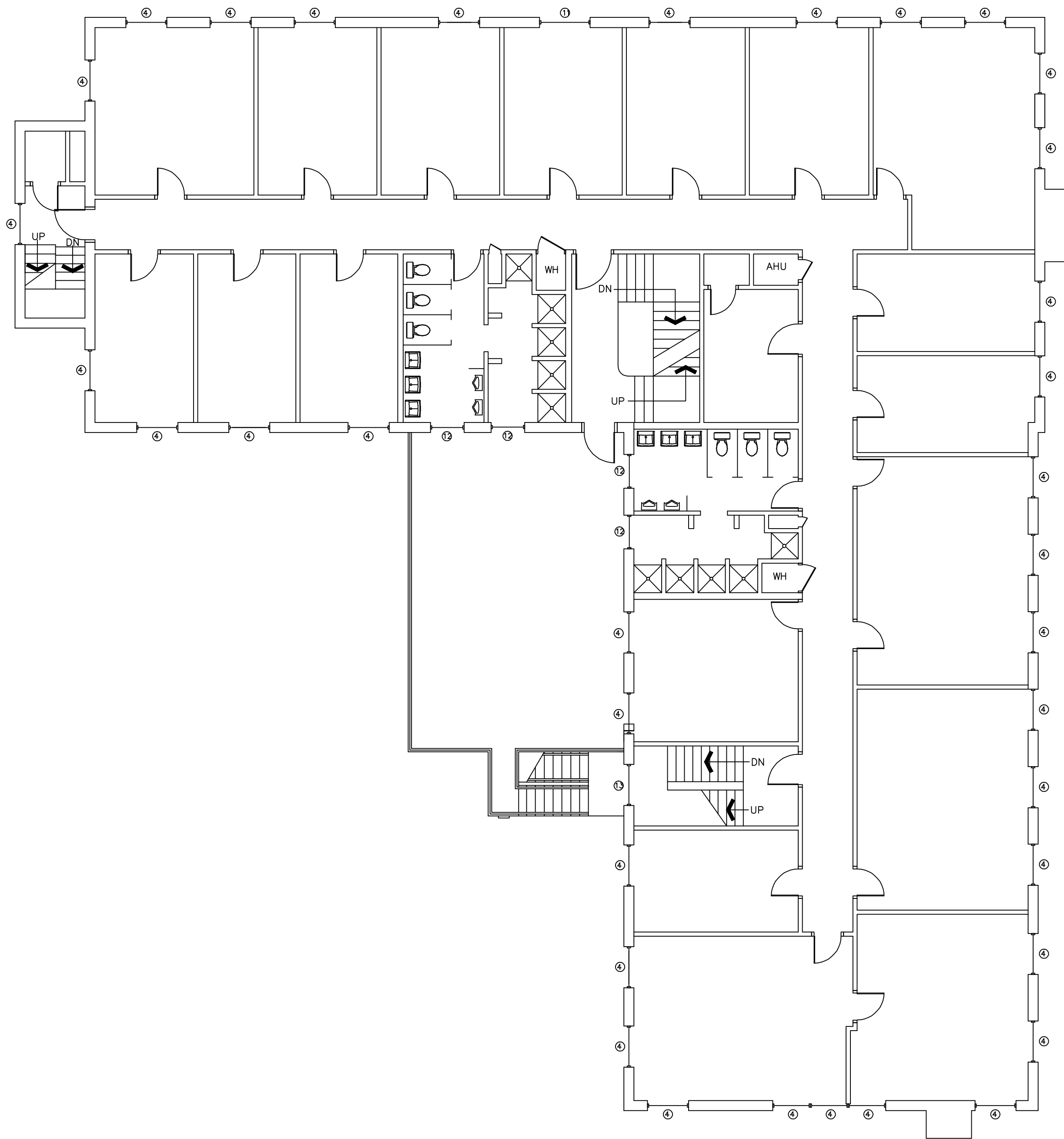
PROJECT NAME: BLANK FOR SECURITY  
PROJECT LOCATION BLANK FOR SECURITY

THIS AS-BUILT DRAWING WAS PREPARED BY:  
AS BUILT PROFESSIONALS  
A SERVICE OF A.E.C. CONSULTANTS, INC.  
WWW.ASBUILTPROFESSIONALS.COM  
866-903-8842  
IND. INC.

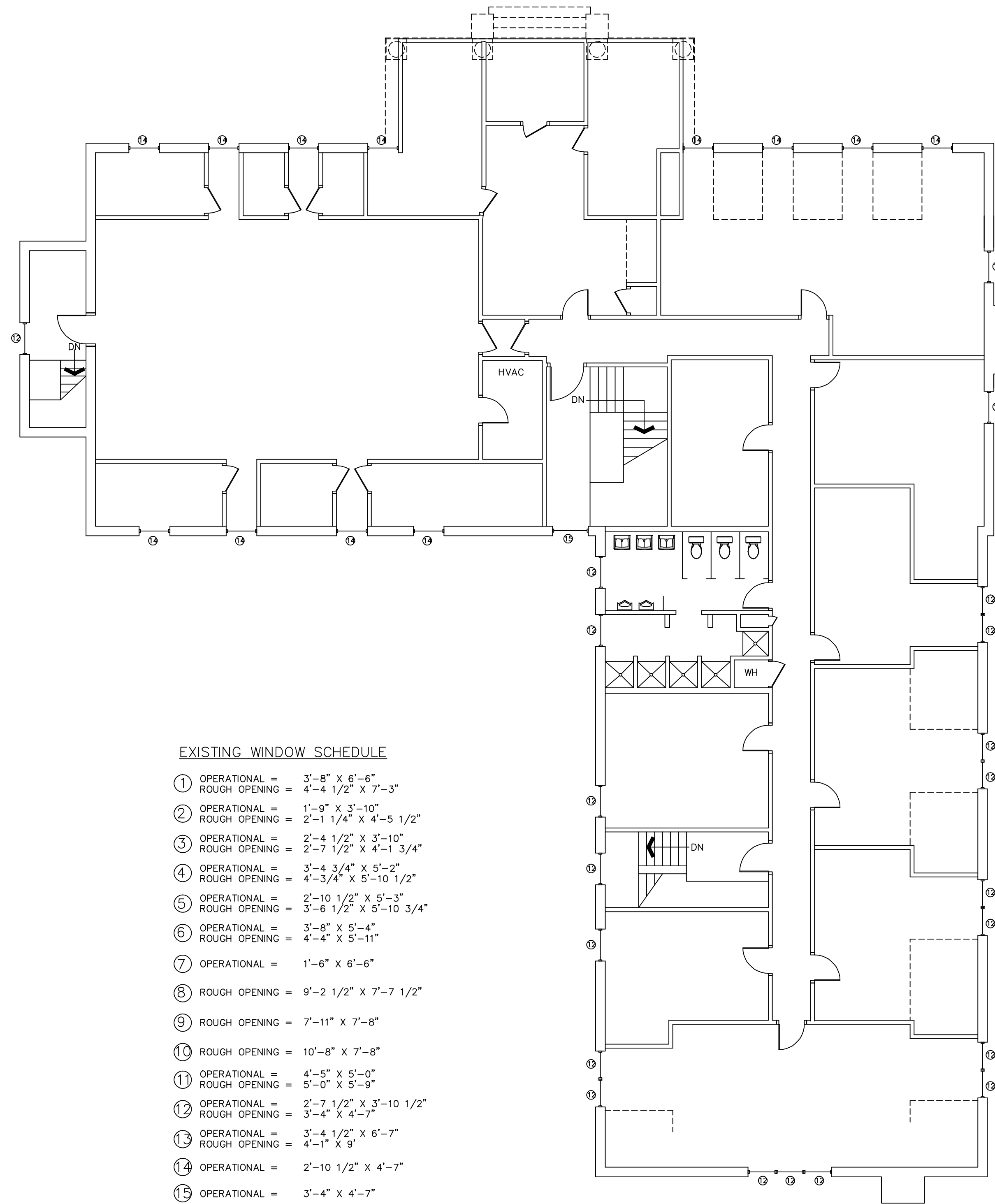
JOB NO.  
000-00-00

SHEET

AB-1 of AB-1



SECOND FLOOR PLAN 1/8"=1'-0"



THIRD FLOOR PLAN 1/8"=1'-0"

EXISTING WINDOW SCHEDULE

- ① OPERATIONAL = 3'-8" X 6'-8"  
ROUGH OPENING = 4'-4 1/2" X 7'-3"
- ② OPERATIONAL = 1'-9" X 3'-10"  
ROUGH OPENING = 2'-1 1/4" X 4'-5 1/2"
- ③ OPERATIONAL = 2'-4 1/2" X 3'-10"  
ROUGH OPENING = 2'-7 1/2" X 4'-1 3/4"
- ④ OPERATIONAL = 3'-4 3/4" X 5'-3"  
ROUGH OPENING = 4'-3/4" X 5'-10 1/2"
- ⑤ OPERATIONAL = 2'-10 1/2" X 5'-3"  
ROUGH OPENING = 3'-6 1/2" X 5'-10 3/4"
- ⑥ OPERATIONAL = 3'-8" X 5'-4"  
ROUGH OPENING = 4'-4" X 5'-11"
- ⑦ OPERATIONAL = 1'-6" X 6'-6"
- ⑧ ROUGH OPENING = 9'-2 1/2" X 7'-7 1/2"
- ⑨ ROUGH OPENING = 7'-11" X 7'-8"
- ⑩ ROUGH OPENING = 10'-8" X 7'-8"
- ⑪ OPERATIONAL = 4'-5" X 5'-0"  
ROUGH OPENING = 5'-0" X 5'-9"
- ⑫ OPERATIONAL = 2'-7 1/2" X 3'-10 1/2"  
ROUGH OPENING = 3'-4" X 4'-7"
- ⑬ OPERATIONAL = 3'-4 1/2" X 6'-7"  
ROUGH OPENING = 4'-1" X 9'
- ⑭ OPERATIONAL = 2'-10 1/2" X 4'-7"
- ⑮ OPERATIONAL = 3'-4" X 4'-7"

PROJECT NAME: BLANK FOR SECURITY  
PROJECT LOCATION BLANK FOR SECURITY

THIS AS-BUILT DRAWING WAS PREPARED BY:  
AS BUILT PROFESSIONALS  
A SERVICE OF A.E.C. CONSULTANTS INC.  
WWW.ASBUILTPROFESSIONALS.COM  
866-903-8842  
TXL, INC.

JOB NO.  
000-00-00

SHEET  
AB-1 of AB-1



FRONT ELEVATION 1/8"=1'-0"



RIGHT SIDE ELEVATION 1/8"=1'-0"



REAR ELEVATION 1/8"=1'-0"



LEFT SIDE ELEVATION 1/8"=1'-0"



PROJECT NAME: BLANK FOR SECURITY  
PROJECT LOCATION BLANK FOR SECURITY

THIS AS-BUILT DRAWING WAS PREPARED BY:  
AS BUILT PROFESSIONALS  
A SERVICE OF A.E.C. CONSULTANTS, INC.  
WWW.ASBUILTPROFESSIONALS.COM  
866-903-8842  
N.J., INC.

JOB NO.  
000-00-00

SHEET

AB-1 of AB-1