

# BOMA ANALYSIS

## Northwest Medical Tower II

San Antonio, TX

| PRELIMINARY CALCULATIONS AND LEASINGS   |         |         |         |         |       |     |         |         |         |         |         |         | INTERMEDIATE CALCULATIONS AND LEASINGS |         |         |                               |         |         |         |         |         |         |         |         |         | SERIAL CALCULATIONS |         |         |         | OPERATIONAL ADJUSTMENTS |         |  |         |         |         |         |  |  |  |
|---|---------|---------|---------|---------|-------|-----|---------|---------|---------|---------|---------|---------|--|---------|---------|-------------------------------|---------|---------|---------|---------|---------|---------|---------|---------|---------|---------------------|---------|---------|---------|-------------------------|---------|--|---------|---------|---------|---------|--|--|--|
| NET   | MEASURE | MEASURE | MEASURE | MEASURE | SPACE | NET | MEASURE | MEASURE | MEASURE | MEASURE | MEASURE | MEASURE | MEASURE                                | MEASURE | MEASURE | MEASURE                       | MEASURE | MEASURE | MEASURE | MEASURE | MEASURE | MEASURE | MEASURE | MEASURE | MEASURE | MEASURE             | MEASURE | MEASURE | MEASURE | MEASURE                 | MEASURE | MEASURE  | MEASURE | MEASURE | MEASURE | MEASURE |  |  |  |
| <p>Values in this chart represent:</p> <ul style="list-style-type: none"> <li>No data entry in this area</li> <li>Formula (do not modify)</li> <li>Use these numbers for leasing</li> </ul> |         |         |         |         |       |     |         |         |         |         |         |         |  |         |         | <p>Scale: X Square meters</p> |         |         |         |         |         |         |         |         |         |                     |         |         |         |                         |         | <p>Key:</p> <ul style="list-style-type: none"> <li>No data entry in this area</li> <li>Formula (do not modify)</li> <li>Use these numbers for leasing</li> </ul> |         |         |         |         |  |  |  |

### ANALYSIS CHART

All areas determined according to: BOMA International standard methods of measurement for commercial buildings latest edition (2010)

## DRAWING INDEX

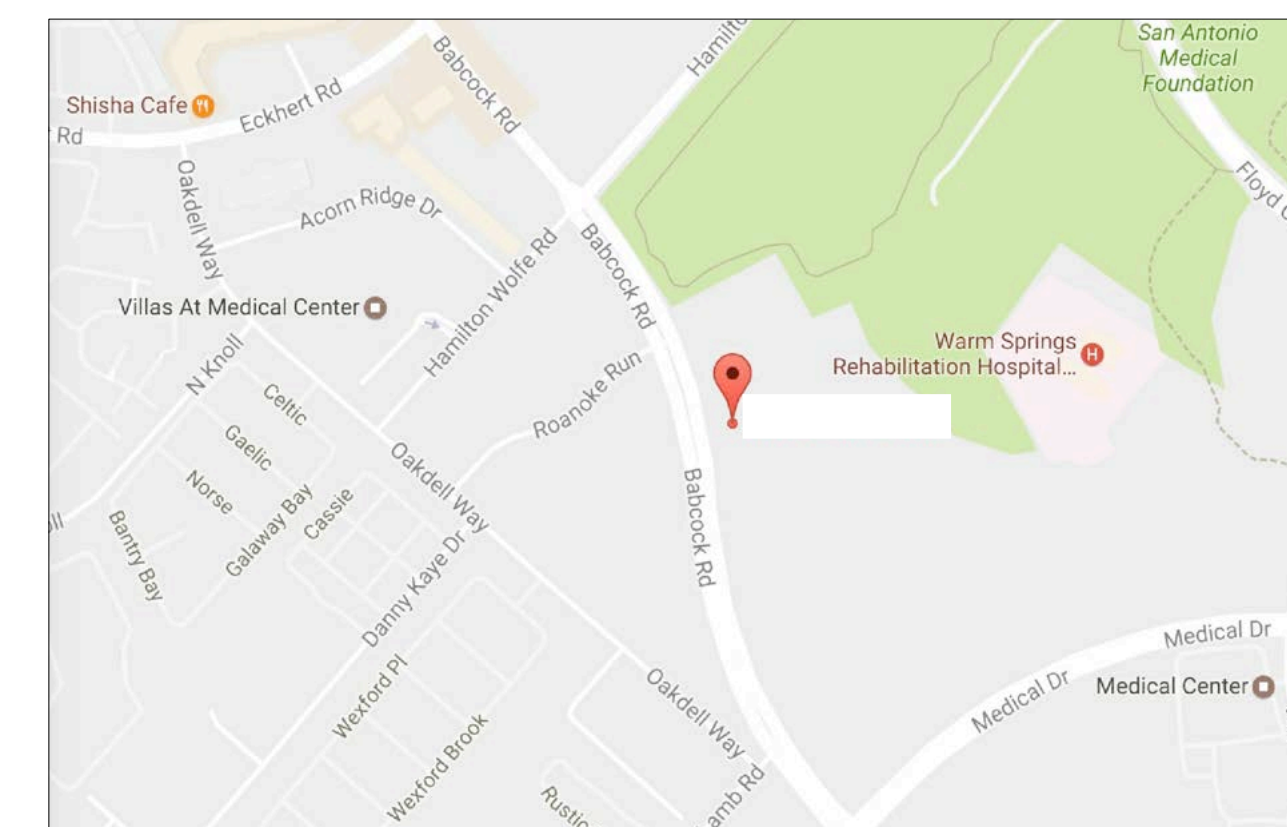
- C-1 COVER SHEET | DRAWING INDEX
- AB-1 FLOOR 1
- AB-2 FLOOR 2
- AB-3 FLOOR 3
- AB-4 FLOOR 4



**ARCHITECTURAL BOMA ANALYSIS**  
Northwest Medical Tower II  
San Antonio, TX

### KEY

- MAJOR VERTICAL PENETRATIONS
- OCCUPANT AREA
- BUILDING AMENITY
- FLOOR SERVICE AREA

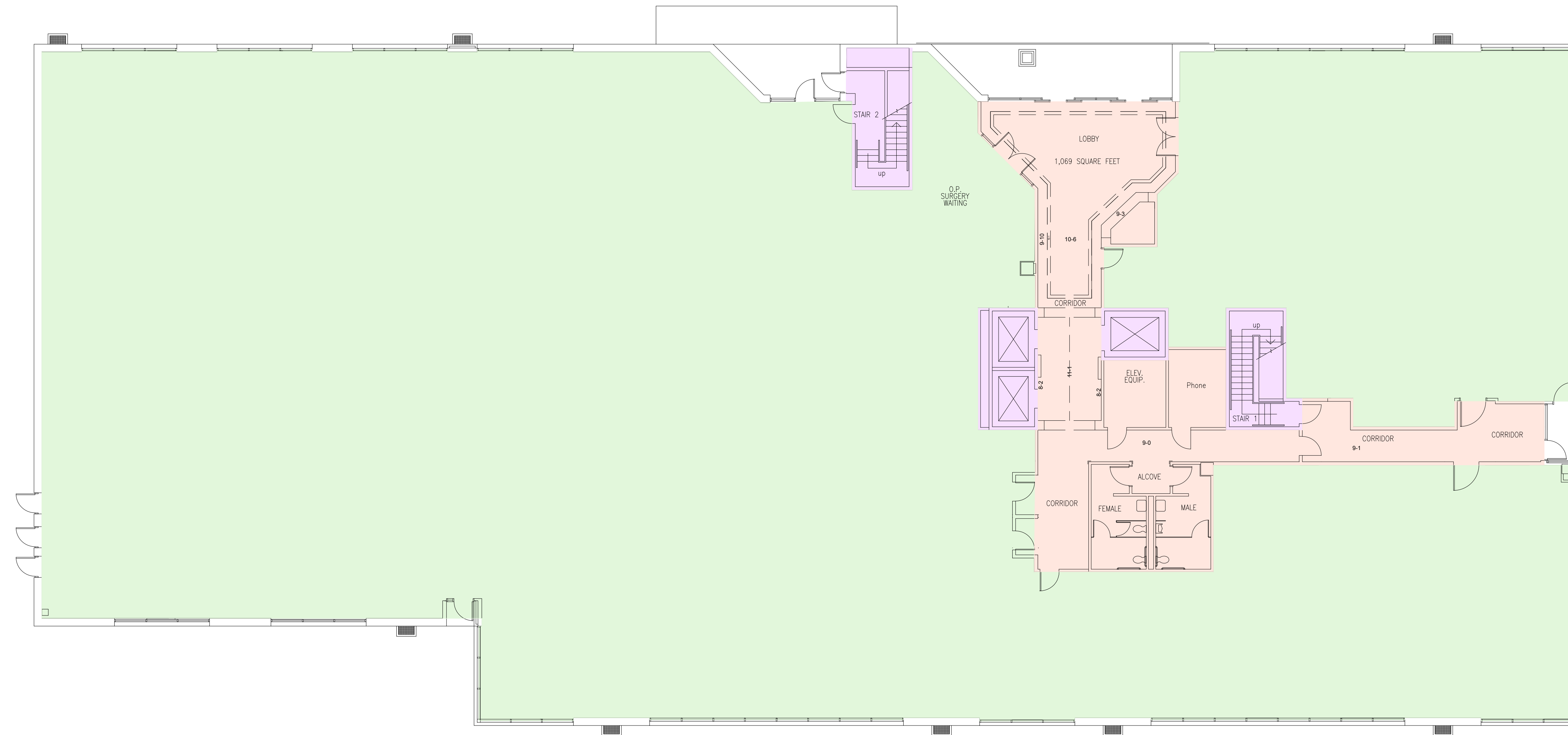


Vicinity Map NTS

**100% SUBMITTAL**

|          |                    |                  |
|----------|--------------------|------------------|
| 01       | 100% SUBMISSION    |                  |
| NO.      | ISSUES   REVISIONS | DATE             |
| HL       |                    | PROJECT MANAGER  |
| HL       |                    | PROJECT DIRECTOR |
| 012317-1 |                    | PROJECT NUMBER   |
|          |                    | SCALE            |
| CL       |                    | DRAWN BY         |
|          |                    | SHEET NUMBER     |

**C-1**



FIRST FLOOR  
TOWER II MEDICAL OFFICE BUILDING

| AREA DATA                   |         |
|-----------------------------|---------|
| INTERIOR GROSS AREA         | = 23880 |
| MAJOR VERTICAL PENETRATIONS | = 685   |
| PARKING                     | = 0     |
| OCCUPANT STORAGE            | = 0     |
| OCCUPANT AREA               | = 21066 |
| BUILDING AMENITIES          | = 0     |
| FLOOR SERVICE AREA          | = 2129  |

**ARCHITECTURAL BOMA ANALYSIS**  
Northwest Medical Tower II

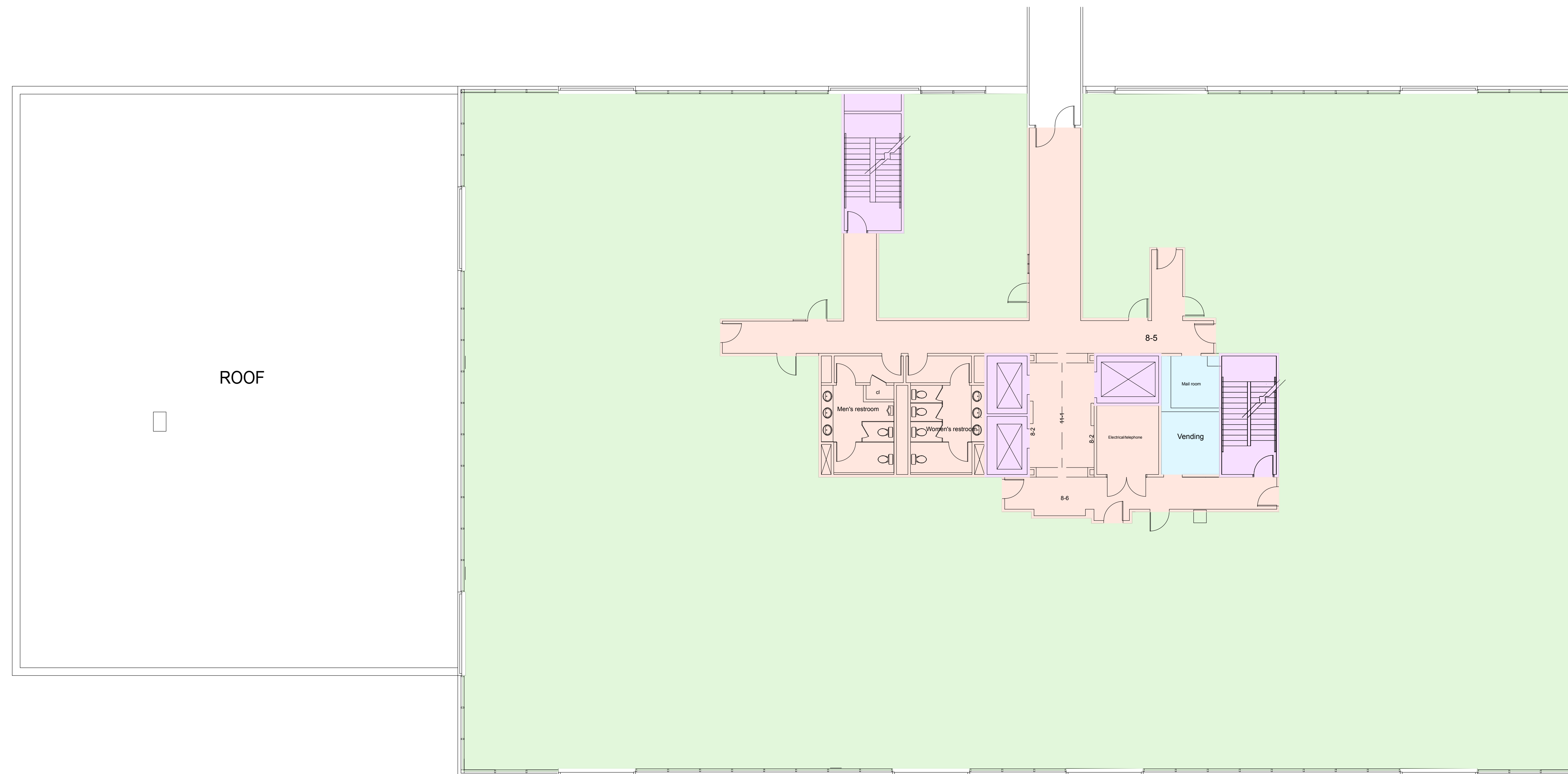
San Antonio, TX

**KEY**

- MAJOR VERTICAL PENETRATIONS
- OCCUPANT AREA
- BUILDING AMENITY
- FLOOR SERVICE AREA

|             |                    |                  |
|-------------|--------------------|------------------|
| 01          | 100% SUBMISSION    |                  |
| NO.         | ISSUES   REVISIONS | DATE             |
| HL          |                    | PROJECT MANAGER  |
| HL          |                    | PROJECT DIRECTOR |
| 012317-1    |                    | PROJECT NUMBER   |
| 3/32"=1'-0" |                    | SCALE            |
| CL          |                    | DRAWN BY         |
|             |                    | SHEET NUMBER     |

**AB-1**



SECOND FLOOR  
TOWER II MEDICAL OFFICE BUILDING

| AREA DATA                   |   |       |
|-----------------------------|---|-------|
| INTERIOR GROSS AREA         | = | 18137 |
| MAJOR VERTICAL PENETRATIONS | = | 610   |
| PARKING                     | = | 0     |
| OCCUPANT STORAGE            | = | 0     |
| OCCUPANT AREA               | = | 15474 |
| BUILDING AMENITIES          | = | 167   |
| FLOOR SERVICE AREA          | = | 1886  |

**ARCHITECTURAL BOMA ANALYSIS**  
Northwest Medical Tower II

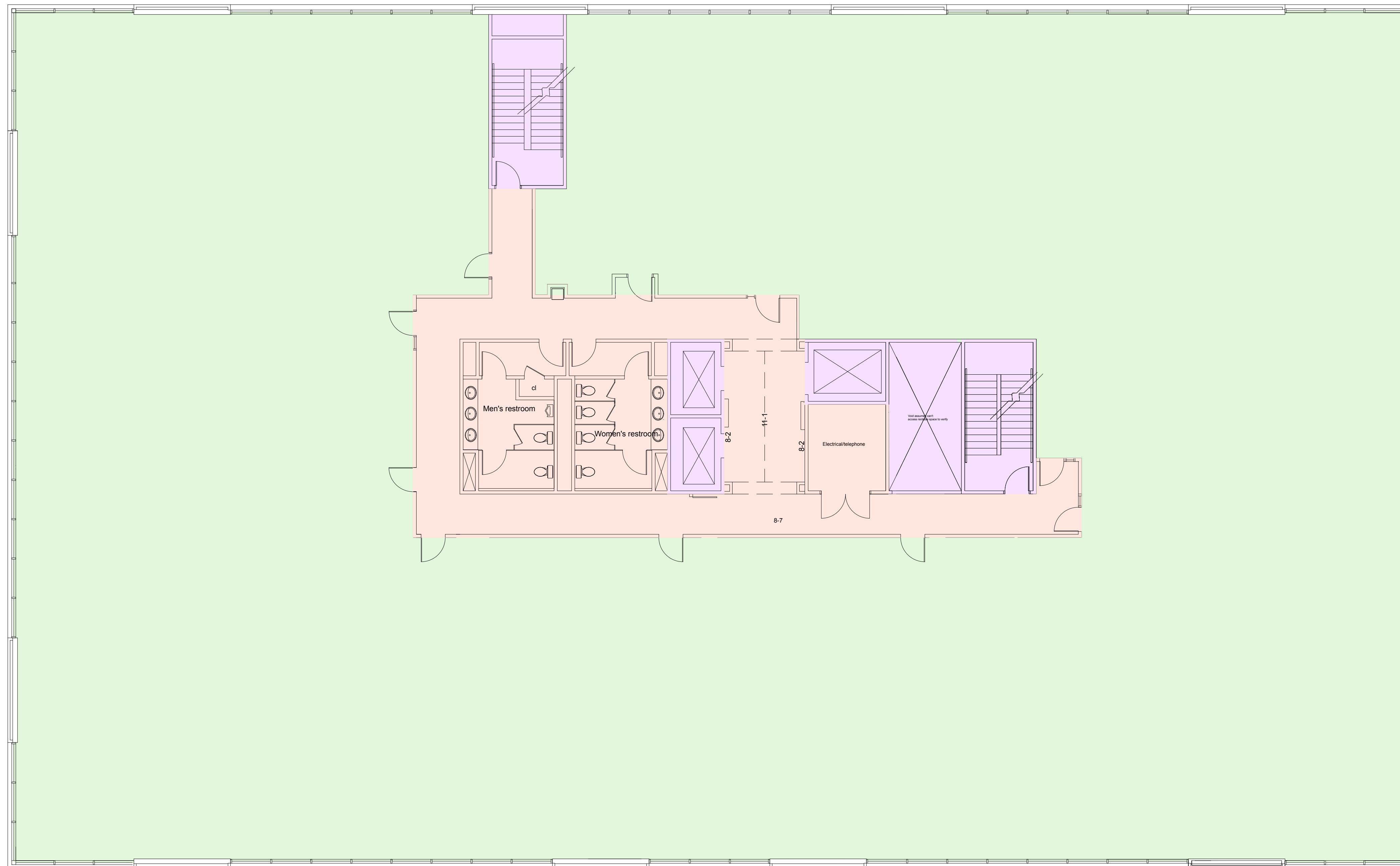
San Antonio, TX

**KEY**

- MAJOR VERTICAL PENETRATIONS
- OCCUPANT AREA
- BUILDING AMENITY
- FLOOR SERVICE AREA

|                    |                    |                  |
|--------------------|--------------------|------------------|
| 01                 | 100% SUBMISSION    |                  |
| NO.                | ISSUES   REVISIONS | DATE             |
| HL                 |                    | PROJECT MANAGER  |
| HL                 |                    | PROJECT DIRECTOR |
| 012317-1           |                    | PROJECT NUMBER   |
| <b>3/32"=1'-0"</b> |                    | SCALE            |
| CL                 |                    | DRAWN BY         |
|                    |                    | SHEET NUMBER     |

**AB-2**



THIRD FLOOR  
TOWER II MEDICAL OFFICE BUILDING

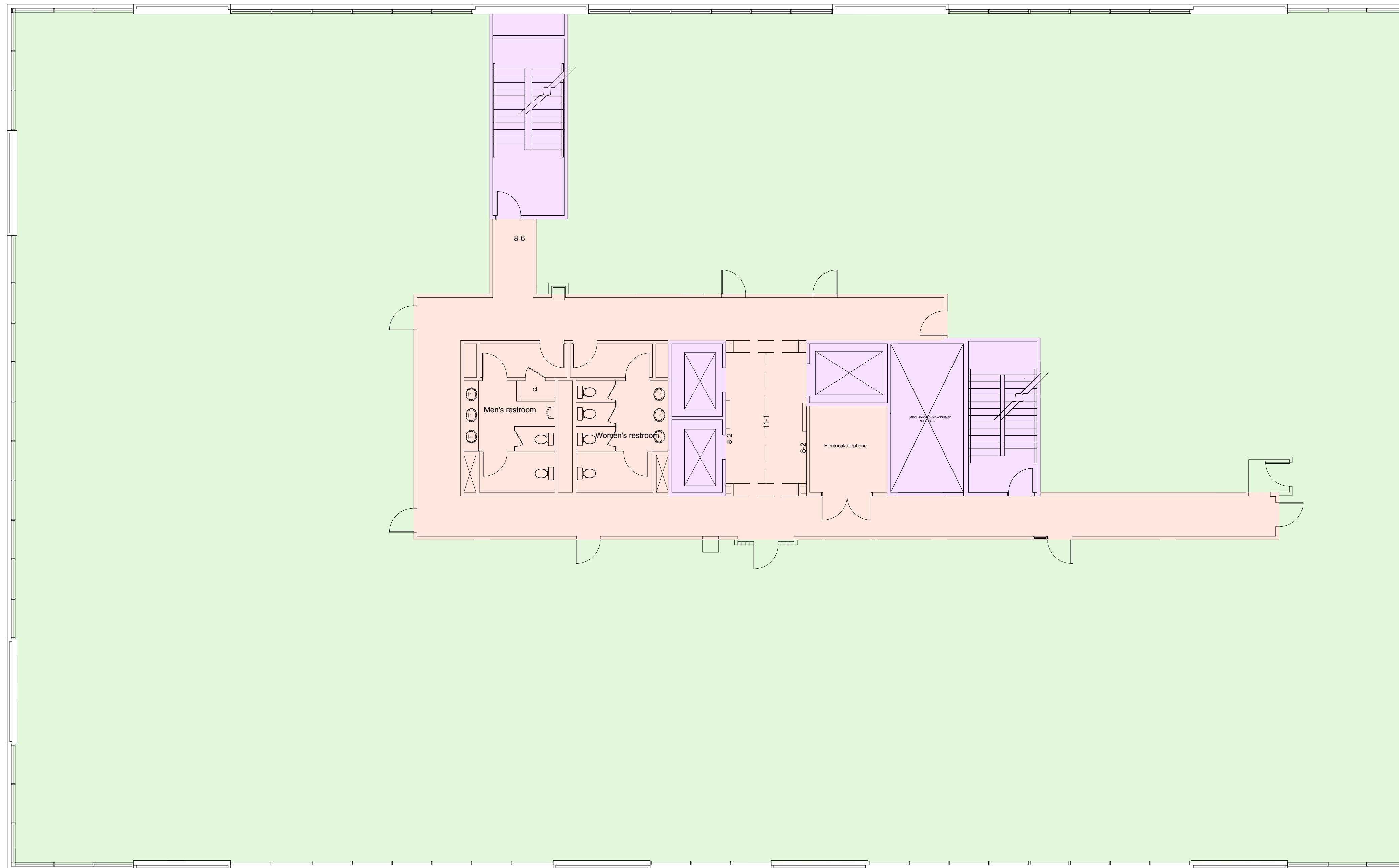
| AREA DATA                   |   |       |
|-----------------------------|---|-------|
| INTERIOR GROSS AREA         | = | 18182 |
| MAJOR VERTICAL PENETRATIONS | = | 781   |
| PARKING                     | = | 0     |
| OCCUPANT STORAGE            | = | 0     |
| OCCUPANT AREA               | = | 15668 |
| BUILDING AMENITIES          | = | 0     |
| FLOOR SERVICE AREA          | = | 1733  |

**ARCHITECTURAL BOMA ANALYSIS**  
Northwest Medical Tower II  
San Antonio, TX

**KEY**

- MAJOR VERTICAL PENETRATIONS
- OCCUPANT AREA
- BUILDING AMENITY
- FLOOR SERVICE AREA

|            |                    |                  |
|------------|--------------------|------------------|
| 01         | 100% SUBMISSION    |                  |
| NO.        | ISSUES   REVISIONS | DATE             |
| HL         |                    | PROJECT MANAGER  |
| HL         |                    | PROJECT DIRECTOR |
| 012317-1   |                    | PROJECT NUMBER   |
| 1/8"=1'-0" |                    | SCALE            |
| CL         |                    | DRAWN BY         |
|            |                    | SHEET NUMBER     |



FOURTH FLOOR  
TOWER II MEDICAL OFFICE BUILDING

| AREA DATA                   |   |       |
|-----------------------------|---|-------|
| INTERIOR GROSS AREA         | = | 18182 |
| MAJOR VERTICAL PENETRATIONS | = | 832   |
| PARKING                     | = | 0     |
| OCCUPANT STORAGE            | = | 0     |
| OCCUPANT AREA               | = | 15410 |
| BUILDING AMENITIES          | = | 0     |
| FLOOR SERVICE AREA          | = | 1940  |

**ARCHITECTURAL BOMA ANALYSIS**  
Northwest Medical Tower II  
San Antonio, TX

**KEY**

- MAJOR VERTICAL PENETRATIONS
- OCCUPANT AREA
- BUILDING AMENITY
- FLOOR SERVICE AREA

|            |                    |                  |
|------------|--------------------|------------------|
| 01         | 100% SUBMISSION    |                  |
| NO.        | ISSUES   REVISIONS | DATE             |
| HL         |                    | PROJECT MANAGER  |
| HL         |                    | PROJECT DIRECTOR |
| 012317-1   |                    | PROJECT NUMBER   |
| 1/8"=1'-0" |                    | SCALE            |
| CL         |                    | DRAWN BY         |
|            |                    | SHEET NUMBER     |