

# AS-BUILT DOCUMENTATION

# One Church

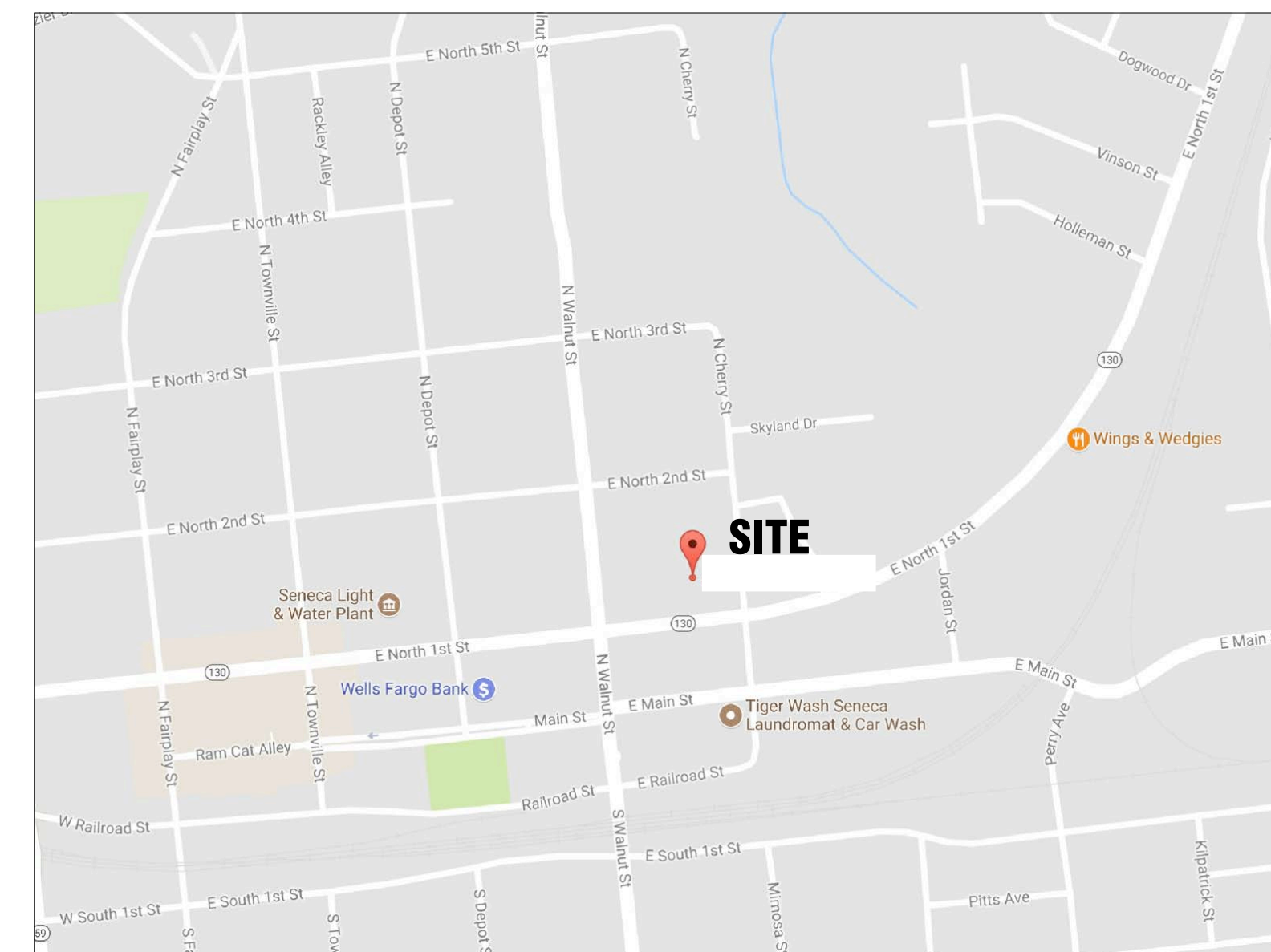
Seneca, SC 29678



100% SUBMITTAL

## DRAWING INDEX

- C-1 COVER SHEET | DRAWING INDEX
- SL SYMBOLS LEGEND
- AB-1 FIRST AND SECOND FLOOR PLAN



VICINITY MAP  
NTS



ARCHITECTURAL AS BUILT  
**One Church**  
Seneca, SC 29678

NO.	ISSUES   REVISIONS	DATE
01	100% SUBMISSION	

HL	PROJECT MANAGER
HL	PROJECT DIRECTOR
012317-1	PROJECT NUMBER
	SCALE
CL	DRAWN BY
	SHEET NUMBER

C-1



# SYMBOLS LEGEND

## RCP

- |  |  |              |   |
|--|--|--------------|---|
|  | EXHAUST VENT                                 |              | TRACK LIGHT OR VANITY LIGHT   |
|  | CEILING MOUNTED LIGHT FIXTURE                |              | WALL-MOUNTED LIGHT FIXTURE  |
|  | CEILING MOUNTED DIRECTIONAL LIGHT            |              | EMERGENCY EXIT SIGN   |
|  | RECESSED CAN LIGHT                           |              | EMERGENCY EXIT LIGHT  |
|  | EYEBALL OR SMALL CAN LIGHT                   |              | EMERGENCY EXIT LIGHT W/ SIGN  |
|  | PENDANT LIGHT                                |              | LIGHTED STAIR SIGN  |
|  | INDIVIDUAL FLUOR. LAY-IN FIXTURE 4 BULB      |              | FLOOD LIGHT   |
|  | INDIVIDUAL FLUOR. HANGING FIXTURE 2 BULB     |              | PHOTO CELL  |
|  | INDIVIDUAL FLUOR. FLUSH MOUNT FIXTURE 4 BULB |              | CEILING FAN   |
|  | CAMERA                                       |              | CEILING FAN W/ LIGHT KIT  |
|  | MOTION DET.                                  |              |   |
|  | SUPPLY VENT                                  | <b>7-2-6</b> | CEILING HEIGHT AND TRIM 1'-2" ABOVE FLOOR BELOW WITH 6" CROWN MOULDING. NOTE: ALL CEILINGS NOT LABELED ARE PLASTER. CEILINGS SHOWN WITH A GRID ARE LAY IN ACOUSTICAL TILE.. |
|  | SUPPLY VENT                                  |              | JUNCTION BOX  |
|  | RETURN VENT                                  |              |   |
|  | RETURN VENT                                  |              |   |
|  | SPEAKER                                      |              |   |

## ELECTRIC

- |  |                                      |
|--|--------------------------------------|
|  | DATA OUTLET                          |
|  | TELEPHONE JACK                       |
|  | ELECTRIC SWITCH                      |
|  | CABLE TELEVISION OUTLET              |
|  | DUPLEX RECEPTACLE OUTLET             |
|  | SPECIAL PURPOSE CONNECTION OR OUTLET |
|  | QUADRUPLEX RECEPTACLE OUTLET         |
|  | FLOOR DUPLEX RECEPTACLE OUTLET       |
|  | ELECTRIC PANEL                       |
|  | ELECTRIC METER                       |
|  | BUTTON SWITCH                        |
|  | DISCONNECT SWITCH                    |
|  | GROUND/FLOOR LIGHT                   |
|  | KEY PAD                              |

## FIRE PROTECTION

- |  |                              |
|--|------------------------------|
|  | FIRE EXTINGUISHER            |
|  | FIRE PULL                    |
|  | FIRE ALARM (HORN/SRTOBE)     |
|  | SMOKE DETECTOR               |
|  | SMOKE ALARM SPEAKER          |
|  | SPRINKLER HEAD CEILING MOUNT |
|  | SPRINKLER HEAD WALL MOUNT    |

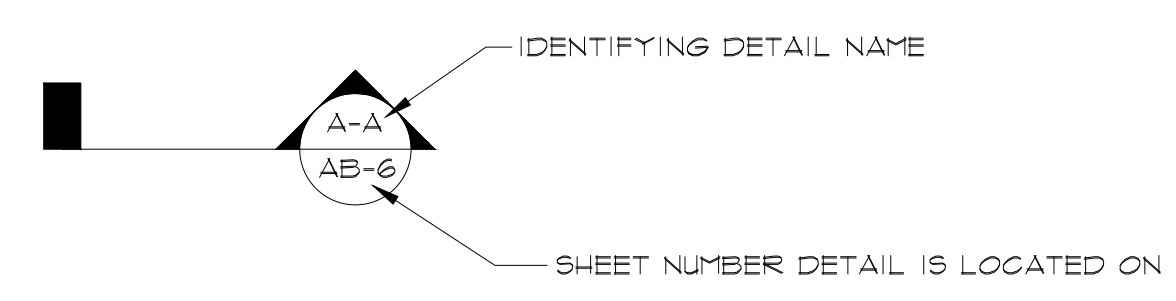
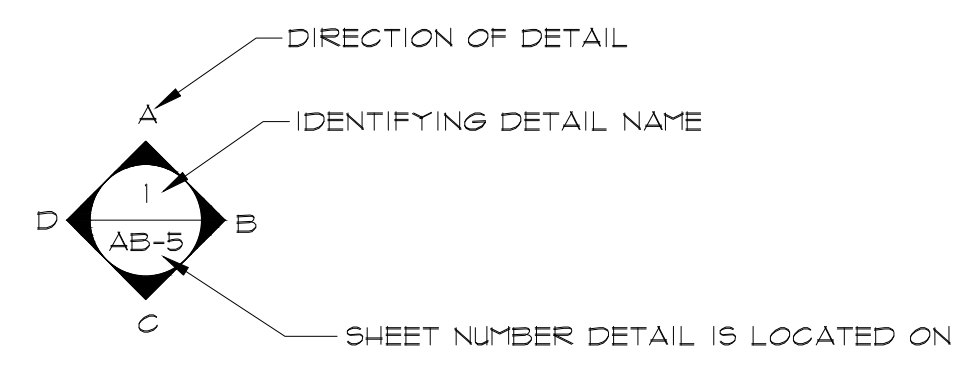
## MEP

- |  |                      |
|--|----------------------|
|  | THERMOSTAT           |
|  | FLOOR DRAIN          |
|  | VALVE                |
|  | HOSE BIB             |
|  | WATER SUPPLY         |
|  | SUSPENDED GAS HEATER |

## MISC

- |  |                |
|--|----------------|
|  | BOLLARD        |
|  | SPOT ELEVATION |

**7-2-6** CEILING HEIGHT AND TRIM 1'-2" ABOVE FLOOR BELOW WITH 6" CROWN MOULDING. NOTE: ALL CEILINGS NOT LABELED ARE PLASTER. CEILINGS SHOWN WITH A GRID ARE LAY IN ACOUSTICAL TILE..



### PHOTO DOCUMENTATION LEGEND

INDICATES LOCATION OF CAMERA

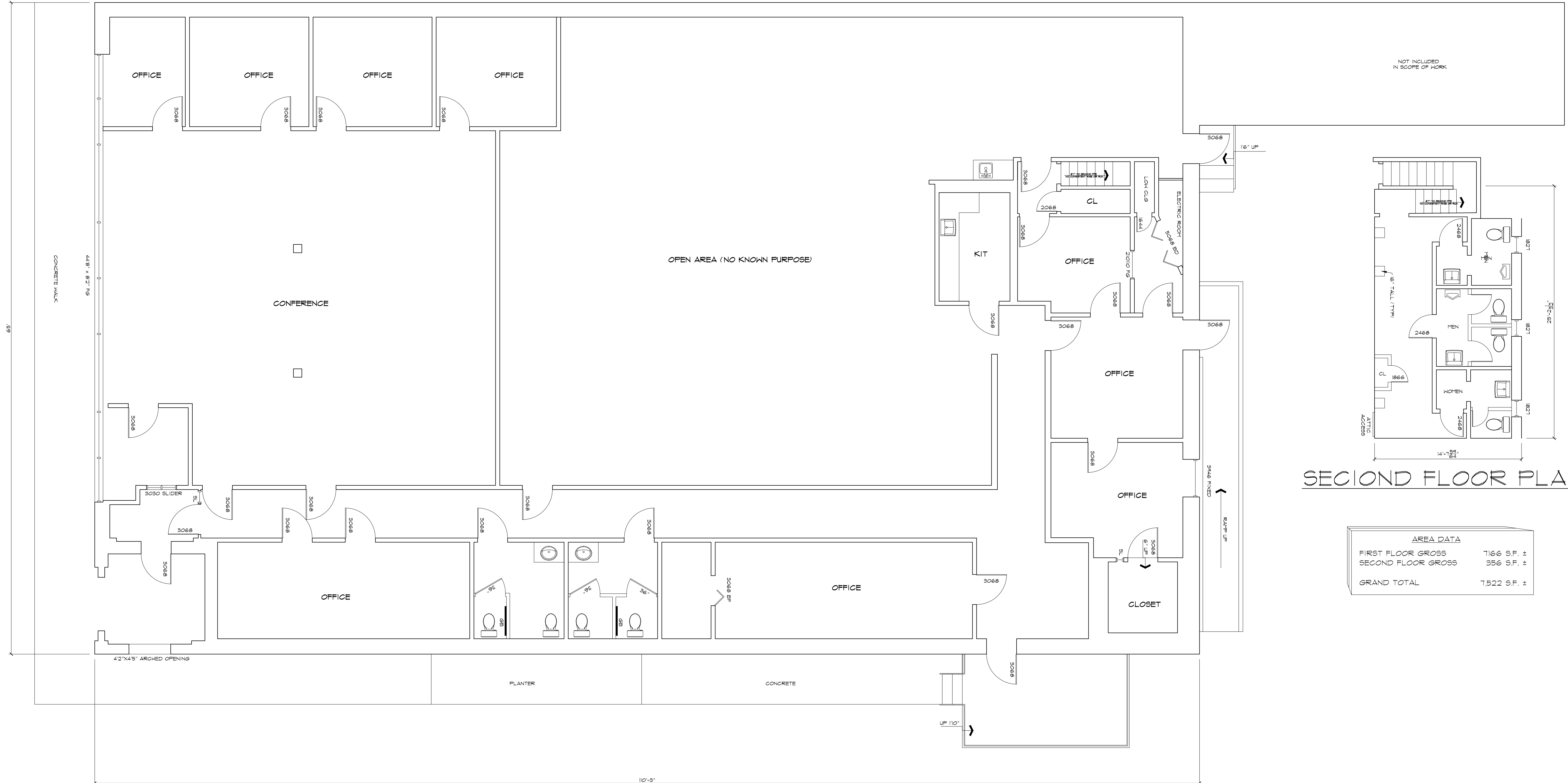
INDICATES DIRECTION OF CAMERA LENS AND CORRESPONDING PHOTO / VIDEO NUMBER

TYPES OF DOCUMENTATION

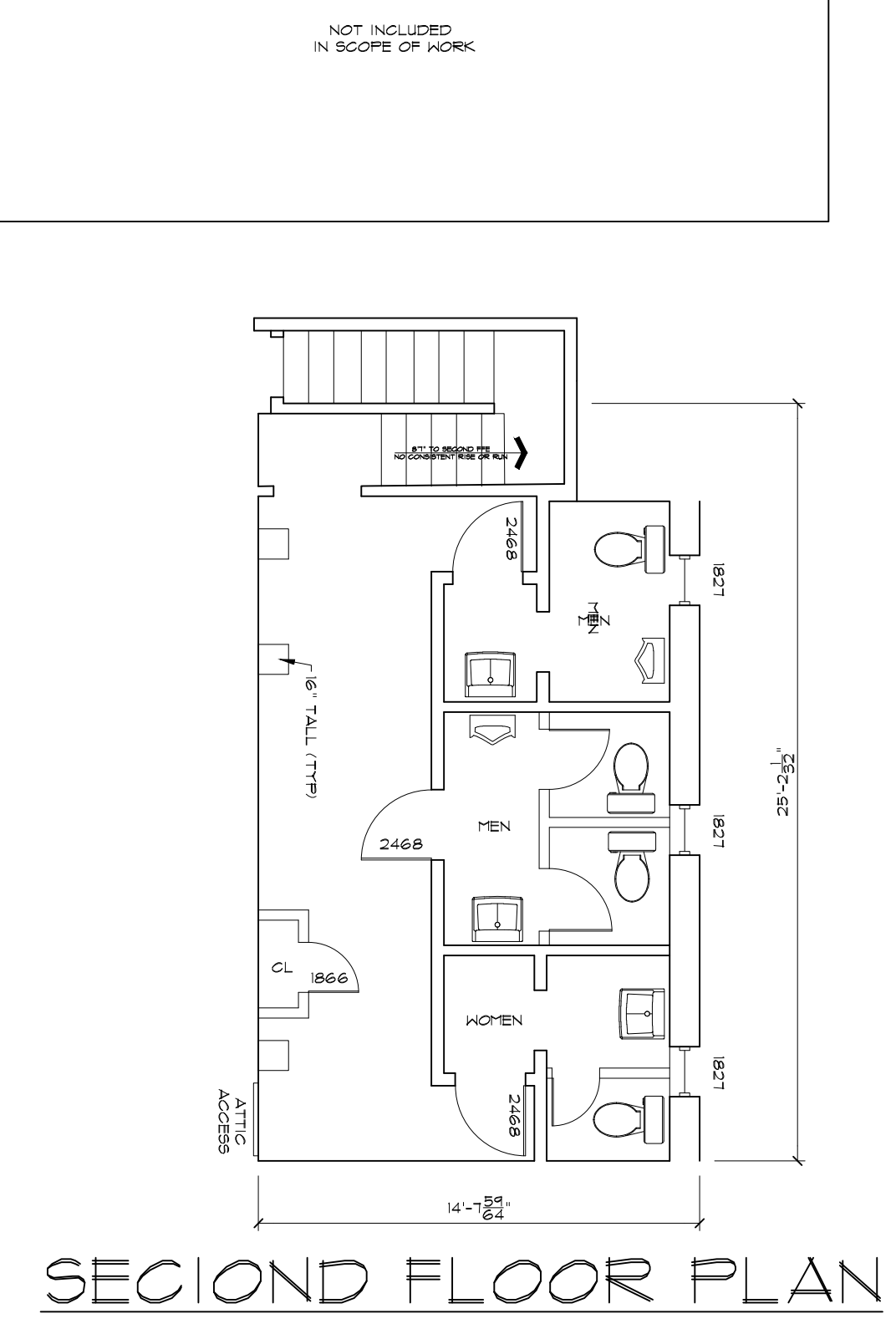
	GROUND BASED PHOTO		GROUND BASED VIDEO		360° SPHERICAL PHOTO		AERIAL BASED PHOTO		AERIAL BASED VIDEO
--	--------------------	--	--------------------	--	----------------------	--	--------------------	--	--------------------

**ARCHITECTURAL AS BUILT**  
**One Church**  
Seneca, SC 29678

01	100% SUBMISSION	
NO.	ISSUES   REVISIONS	DATE
SHEET TITLE		
HL	PROJECT MANAGER	
HL	PROJECT DIRECTOR	
012317-1	PROJECT NUMBER	
NOT TO SCALE	SCALE	
CL	DRAWN BY	
SL	SHEET NUMBER	



FIRST FLOOR PLAN



SECOND FLOOR PLAN

AREA DATA	
FIRST FLOOR GROSS	7166 S.F. ±
SECOND FLOOR GROSS	356 S.F. ±
GRAND TOTAL	7522 S.F. ±

**ARCHITECTURAL AS BUILT**  
**One Church**  
Seneca, SC 29678

01	100% SUBMISSION	
NO.	ISSUES   REVISIONS	DATE
SHEET TITLE		
HL	PROJECT MANAGER	
HL	PROJECT DIRECTOR	
012317-1	PROJECT NUMBER	
3/16"=1'-0"	SCALE	
CL	DRAWN BY	
	SHEET NUMBER	

**AB-1**