

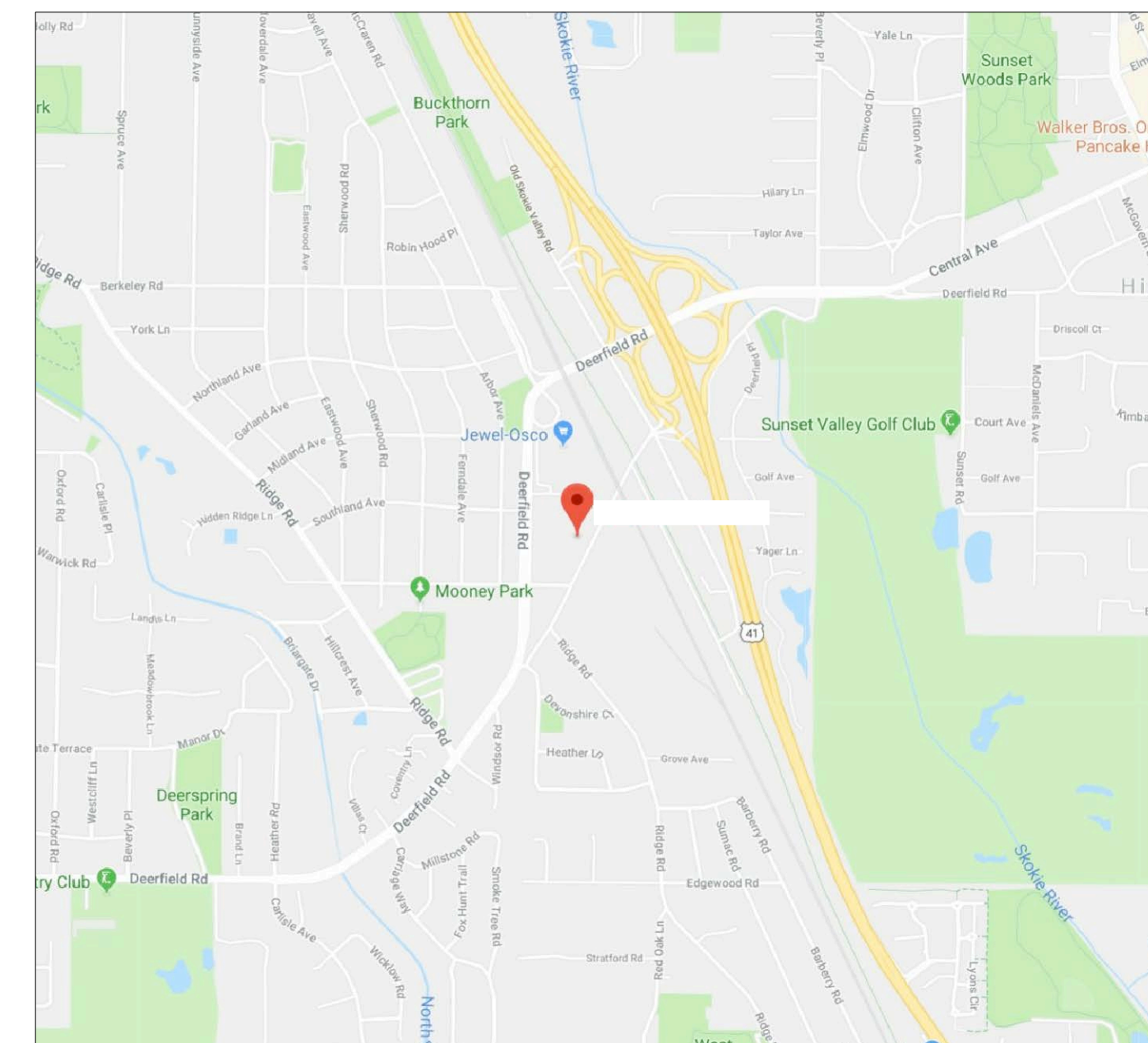
AS-BUILT DOCUMENTATION

HIGHLAND PARK, IL



DRAWING INDEX

- C-1 COVER SHEET | DRAWING INDEX
- SL SYMBOLS LEGEND
- AB-1 MAIN FLOOR PLAN
- AB-2 MEZZNAINE FLOOR PLAN
- AB-3 EXTERIOR ELEVATIONS



VICINITY MAP
NTS

AREA DATA	
AREA 1	54,132 S.F. ±
AREA 2	22,381 S.F. ±
AREA 3	1,696 S.F. ±
AREA 4	1,333 S.F. ±
AREA 5	1,298 S.F. ±
AREA 6	1,694 S.F. ±
AREA 7	1,659 S.F. ±
AREA 8	1,896 S.F. ±
AREA 9	1,647 S.F. ±
AREA 10	14,299 S.F. ±
AREA 11	2,452 S.F. ±
GRAND TOTAL	104,493 S.F. ±

AS BUILT
PROFESSIONALS
www.asbuiltprofessionals.com
A DIVISION OF:
AEC
CONSULTANTS INC
844.272.8458
844 AS BUILT
© 2018 AEC CONSULTANTS INC

ARCHITECTURAL AS BUILT
HIGHLAND PARK, IL

01	100% SUBMISSION	SEE COVER SHEET
NO.	ISSUES REVISIONS	DATE
		SHEET TITLE

COVER SHEET

HL	PROJECT MANAGER
HL	PROJECT DIRECTOR
-	PROJECT NUMBER
AS NOTED	SCALE
CL	DRAWN BY
	SHEET NUMBER

C-1

100% SUBMITTAL

SYMBOLS LEGEND

NOT TO SCALE

RCP

- | | | | |
|--|--|--------------|---|
| | EXHAUST VENT | | TRACK LIGHT OR VANITY LIGHT |
| | CEILING MOUNTED LIGHT FIXTURE | | WALL-MOUNTED LIGHT FIXTURE |
| | CEILING MOUNTED DIRECTIONAL LIGHT | | EMERGENCY EXIT SIGN |
| | RECESSED CAN LIGHT | | EMERGENCY EXIT LIGHT |
| | EYEBALL OR SMALL CAN LIGHT | | EMERGENCY EXIT LIGHT W/ SIGN |
| | PENDANT LIGHT | | LIGHTED STAIR SIGN |
| | INDIVIDUAL FLUOR. LAY-IN FIXTURE 4 BULB | | FLOOD LIGHT |
| | INDIVIDUAL FLUOR. HANGING FIXTURE 2 BULB | | PHOTO CELL |
| | INDIVIDUAL FLUOR. FLUSH MOUNT FIXTURE 4 BULB | | CEILING FAN |
| | CAMERA | | CEILING FAN W/ LIGHT KIT |
| | MOTION DET. | 7-2-6 | CEILING HEIGHT AND TRIM 7'-2" ABOVE FLOOR BELOW WITH 6" CROWN MOULDING. NOTE: ALL CEILINGS NOT LABELED ARE PLASTER. CEILINGS SHOWN WITH A GRID ARE LAY IN ACOUSTICAL TILE.. |
| | SUPPLY VENT | | JUNCTION BOX |
| | RETURN VENT | | |
| | SPEAKER | | |

ELECTRIC

- | | |
|--|--------------------------------------|
| | DATA OUTLET |
| | TELEPHONE JACK |
| | ELECTRIC SWITCH |
| | CABLE TELEVISION OUTLET |
| | DUPLEX RECEPTACLE OUTLET |
| | SPECIAL PURPOSE CONNECTION OR OUTLET |
| | QUADRUPLEX RECEPTACLE OUTLET |
| | FLOOR DUPLEX RECEPTACLE OUTLET |
| | ELECTRIC PANEL |
| | ELECTRIC METER |
| | BUTTON SWITCH |
| | DISCONNECT SWITCH |
| | GROUND/FLOOR LIGHT |
| | KEY PAD |

FIRE PROTECTION

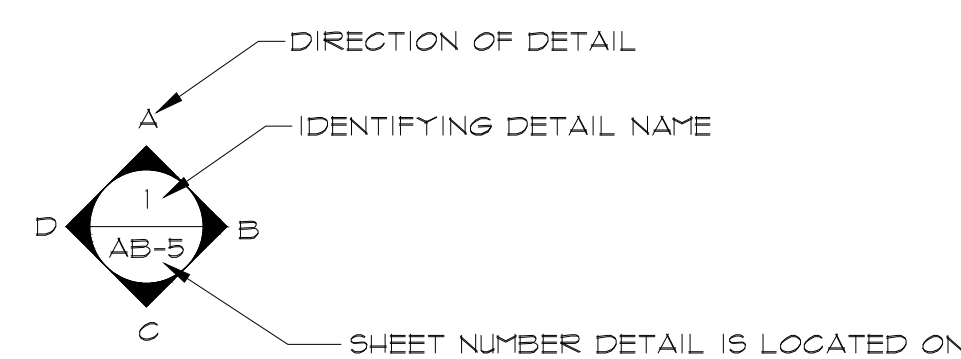
- | | |
|--|------------------------------|
| | FIRE EXTINGUISHER |
| | FIRE PULL |
| | FIRE ALARM (HORN/SRTOBE) |
| | SMOKE DETECTOR |
| | SMOKE ALARM SPEAKER |
| | SPRINKLER HEAD CEILING MOUNT |
| | SPRINKLER HEAD WALL MOUNT |

MEP

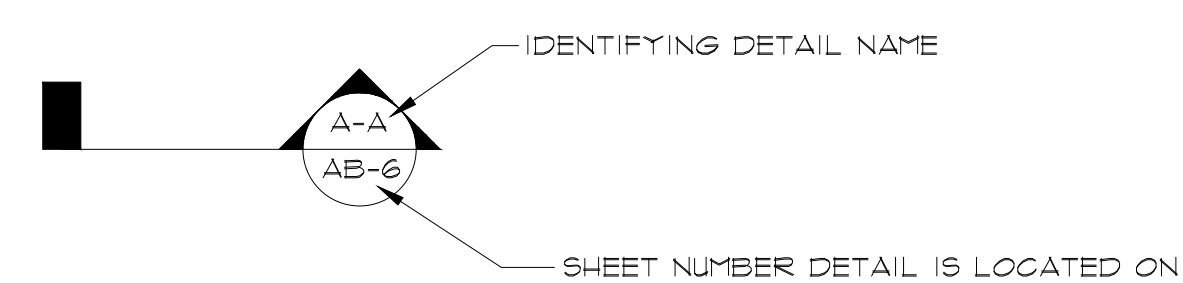
- | | |
|--|----------------------|
| | THERMOSTAT |
| | FLOOR DRAIN |
| | VALVE |
| | HOSE BIB |
| | WATER SUPPLY |
| | SUSPENDED GAS HEATER |

MISC

- | | |
|--|----------------|
| | BOLLARD |
| | SPOT ELEVATION |



INTERIOR ELEVATIONS



BUILDING SECTION

PHOTO DOCUMENTATION LEGEND

- | | |
|-------------------------------|---|
| | INDICATES LOCATION OF CAMERA |
| | INDICATES DIRECTION OF CAMERA LENS AND CORRESPONDING PHOTO / VIDEO NUMBER |
| TYPES OF DOCUMENTATION | |
| | GROUND BASED PHOTO |
| | GROUND BASED VIDEO |
| | 360° SPHERICAL PHOTO |
| | AERIAL BASED PHOTO |
| | AERIAL BASED VIDEO |

**ARCHITECTURAL AS BUILT
HIGHLAND PARK, IL**

01	100% SUBMISSION	SEE COVER SHEET
NO.	ISSUES REVISIONS	DATE
SHEET TITLE		
HL	PROJECT MANAGER	
HL	PROJECT DIRECTOR	
-	PROJECT NUMBER	
AS NOTED	SCALE	
CL	DRAWN BY	
	SHEET NUMBER	

SL



ARCHITECTURAL AS BUILT
HIGHLAND PARK, IL



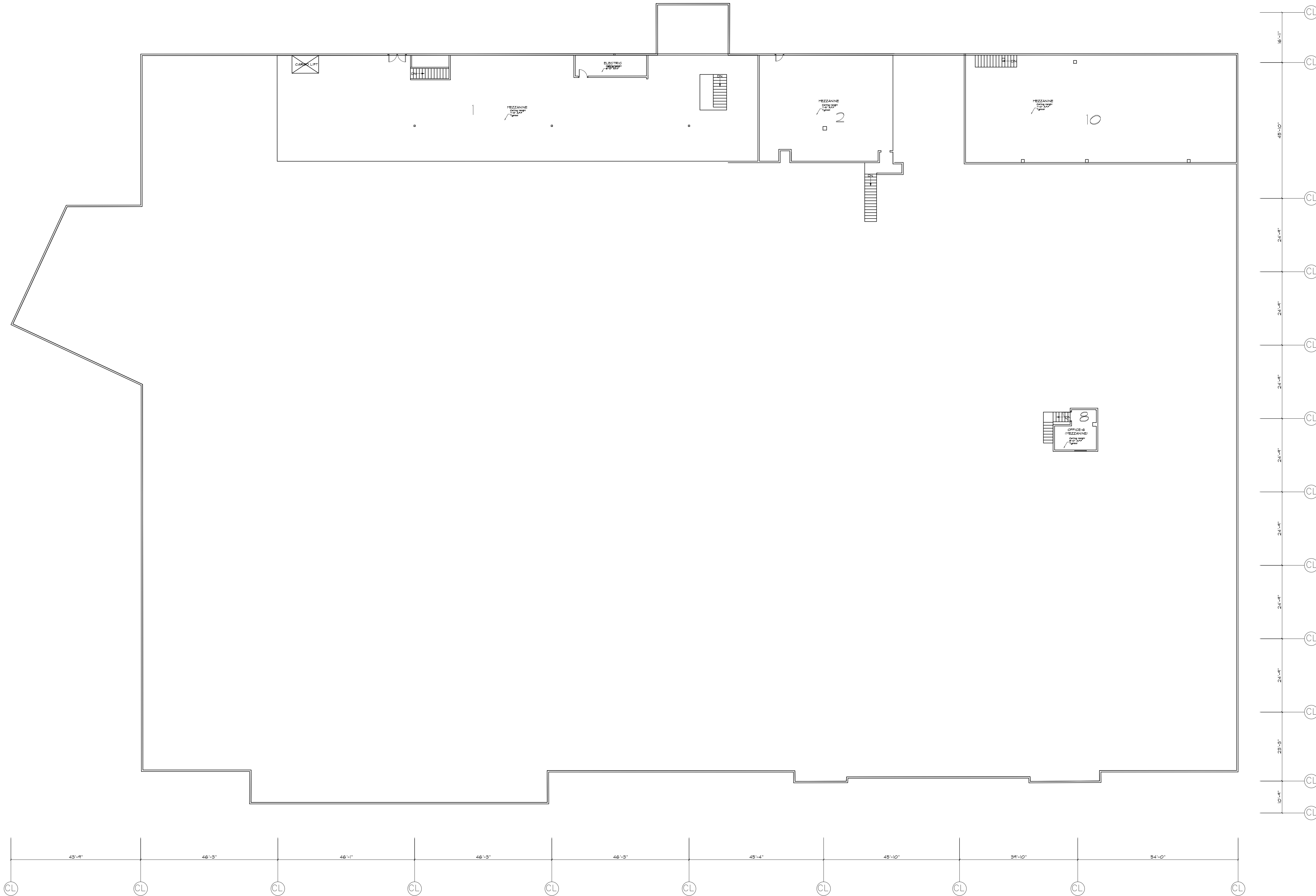
MAIN FLOOR PLAN 93,171 SQ. FT
 SCALE 1/16" = 1'-0"

01	100% SUBMISSION	SEE COVER SHEET
NO.	ISSUES REVISIONS	DATE
		SHEET TITLE

HL	PROJECT MANAGER
HL	PROJECT DIRECTOR
-	PROJECT NUMBER
AS NOTED	SCALE
CL	DRAWN BY
	SHEET NUMBER

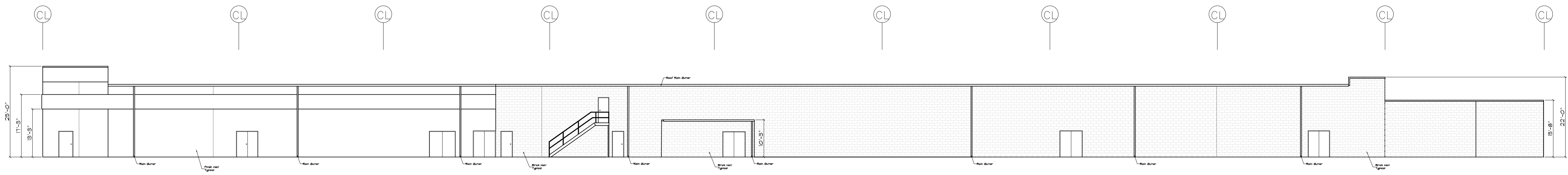
AB-1

**ARCHITECTURAL AS BUILT
HIGHLAND PARK, IL**

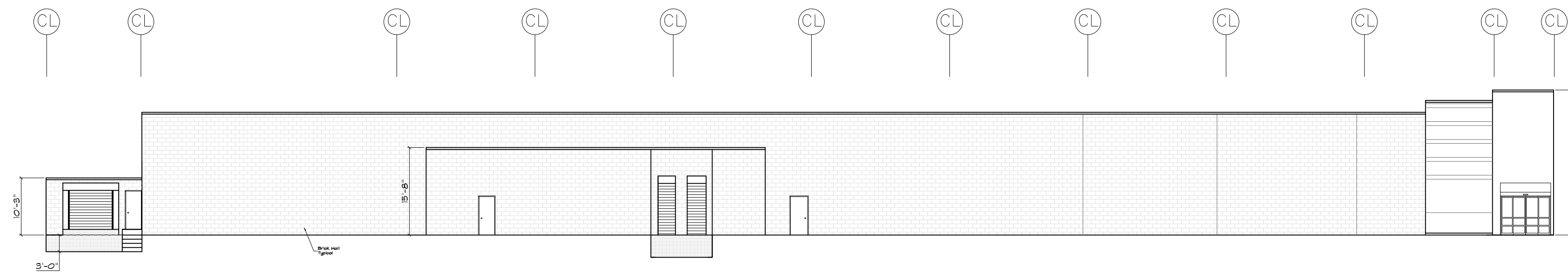


01	100% SUBMISSION	SEE COVER SHEET
NO.	ISSUES REVISIONS	DATE
		SHEET TITLE
HL		PROJECT MANAGER
HL		PROJECT DIRECTOR
-		PROJECT NUMBER
AS NOTED		SCALE
CL		DRAWN BY
		SHEET NUMBER

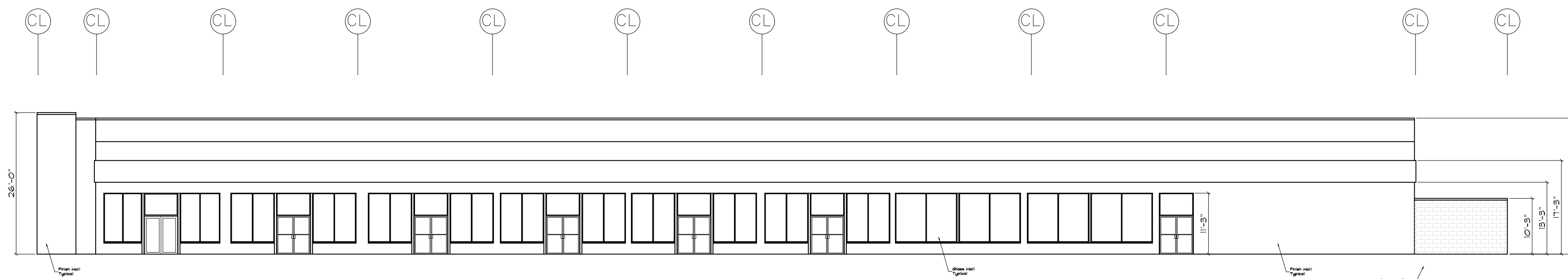
ARCHITECTURAL AS BUILT
HIGHLAND PARK, IL



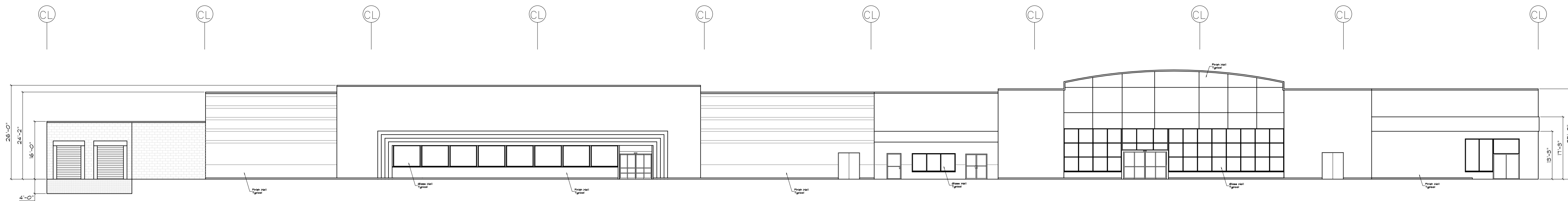
REAR ELEVATION
 SCALE 1/16" = 1'-0"



LEFT SIDE ELEVATION
 SCALE 1/16" = 1'-0"



RIGHT SIDE ELEVATION
 SCALE 1/16" = 1'-0"



FRONT ELEVATION
 SCALE 1/16" = 1'-0"

01	100% SUBMISSION	SEE COVER SHEET
NO.	ISSUES REVISIONS	DATE
SHEET TITLE		

HL	PROJECT MANAGER
HL	PROJECT DIRECTOR
-	PROJECT NUMBER
AS NOTED	SCALE
CL	DRAWN BY
	SHEET NUMBER