

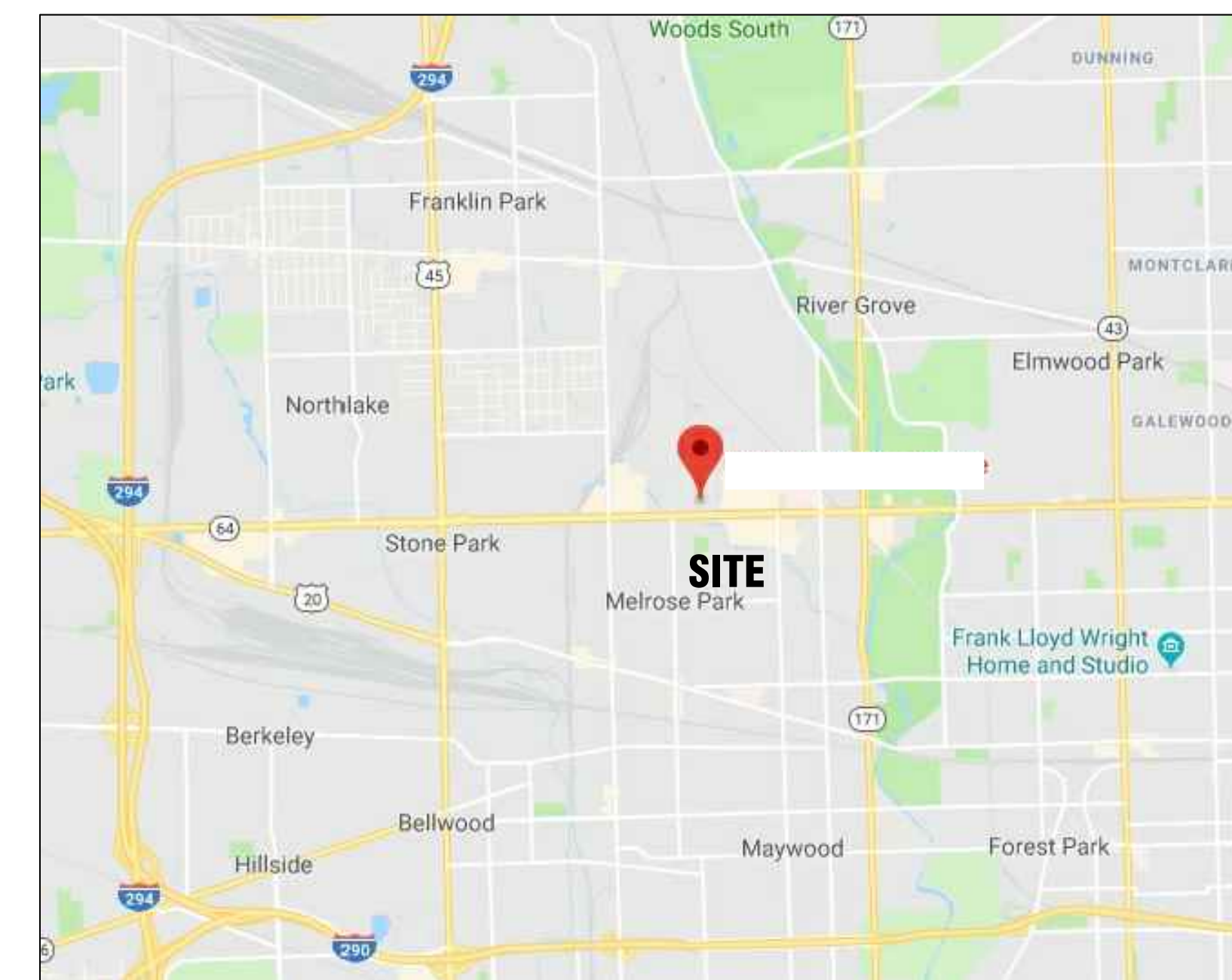
# AS-BUILT DOCUMENTATION

## Melrose Park, IL



### DRAWING INDEX

- C-1 COVER SHEET | DRAWING INDEX
- SL SYMBOLS LEGEND
- AB-1 EXTERIOR ELEVATIONS
- AB-2 FLOOR PLAN



VICINITY MAP  
NTS

AREA DATA	
CONDITIONED SPACE	39,230 S.F. ±

**AS BUILT PROFESSIONALS**  
www.asbuiltprofessionals.com  
A DIVISION OF:

**AEC CONSULTANTS INC**

844.272.8458  
844 AS BUILT

© 2018 AEC CONSULTANTS INC

**ARCHITECTURAL AS BUILT**

**Melrose Park, IL**

NO.	ISSUES   REVISIONS	DATE	SHEET TITLE
01	100% SUBMISSION		SEE COVER SHEET

**COVER SHEET**

HL	PROJECT MANAGER
HL	PROJECT DIRECTOR
-	PROJECT NUMBER
AS NOTED	SCALE
CL	DRAWN BY
	SHEET NUMBER

**C-1**

**100% SUBMITTAL**

# SYMBOLS LEGEND

NOT TO SCALE

## RCP

- |  |  |  |   |
|--|--|--|---|
|  | EXHAUST VENT                                 |  | TRACK LIGHT OR VANITY LIGHT   |
|  | CEILING MOUNTED LIGHT FIXTURE                |  | WALL-MOUNTED LIGHT FIXTURE  |
|  | CEILING MOUNTED DIRECTIONAL LIGHT            |  | EMERGENCY EXIT SIGN   |
|  | RECESSED CAN LIGHT                           |  | EMERGENCY EXIT LIGHT  |
|  | EYEBALL OR SMALL CAN LIGHT                   |  | EMERGENCY EXIT LIGHT W/ SIGN  |
|  | PENDANT LIGHT                                |  | LIGHTED STAIR SIGN  |
|  | INDIVIDUAL FLUOR. LAY-IN FIXTURE 4 BULB      |  | FLOOD LIGHT   |
|  | INDIVIDUAL FLUOR. HANGING FIXTURE 2 BULB     |  | PHOTO CELL  |
|  | INDIVIDUAL FLUOR. FLUSH MOUNT FIXTURE 4 BULB |  | CEILING FAN   |
|  | CAMERA                                       |  | CEILING FAN W/ LIGHT KIT  |
|  | MOTION DET.                                  |  | 7-2-6 CEILING HEIGHT AND TRIM 7'-2" ABOVE FLOOR BELOW WITH 6" CROWN MOULDING. NOTE: ALL CEILINGS NOT LABELED ARE PLASTER. CEILINGS SHOWN WITH A GRID ARE LAY IN ACOUSTICAL TILE.. |
|  | SUPPLY VENT                                  |  | JUNCTION BOX  |
|  | SUPPLY VENT                                  |  |   |
|  | RETURN VENT                                  |  |   |
|  | RETURN VENT                                  |  |   |
|  | SPEAKER                                      |  |   |

## ELECTRIC

- |  |                                      |
|--|--------------------------------------|
|  | DATA OUTLET                          |
|  | TELEPHONE JACK                       |
|  | ELECTRIC SWITCH                      |
|  | CABLE TELEVISION OUTLET              |
|  | DUPLEX RECEPTACLE OUTLET             |
|  | SPECIAL PURPOSE CONNECTION OR OUTLET |
|  | QUADRUPLEX RECEPTACLE OUTLET         |
|  | FLOOR DUPLEX RECEPTACLE OUTLET       |
|  | ELECTRIC PANEL                       |
|  | ELECTRIC METER                       |
|  | BUTTON SWITCH                        |
|  | DISCONNECT SWITCH                    |
|  | GROUND/FLOOR LIGHT                   |
|  | KEY PAD                              |

## FIRE PROTECTION

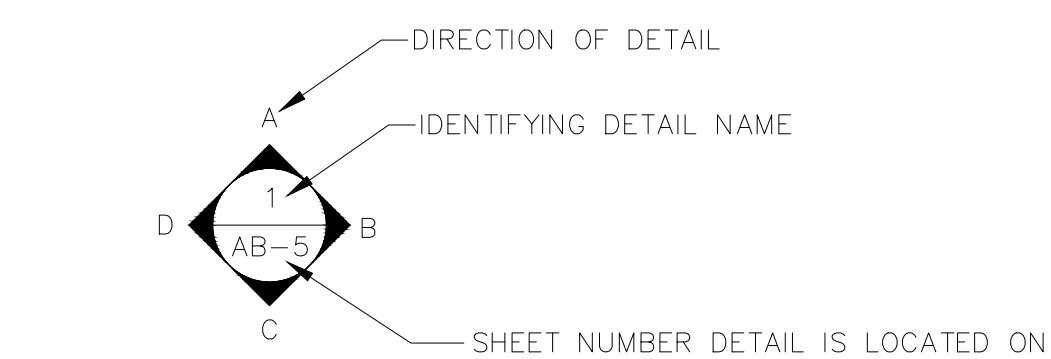
- |  |                              |
|--|------------------------------|
|  | FIRE EXTINGUISHER            |
|  | FIRE PULL                    |
|  | FIRE ALARM (HORN/SRTOBE)     |
|  | SMOKE DETECTOR               |
|  | SMOKE ALARM SPEAKER          |
|  | SPRINKLER HEAD CEILING MOUNT |
|  | SPRINKLER HEAD WALL MOUNT    |

## MEP

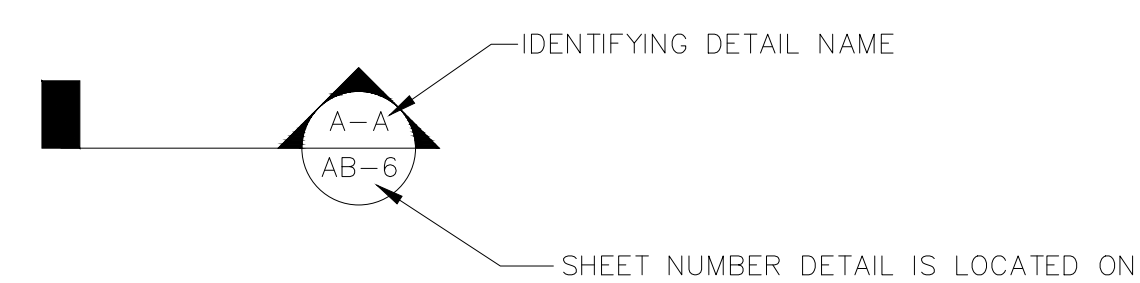
- |  |                      |
|--|----------------------|
|  | THERMOSTAT           |
|  | FLOOR DRAIN          |
|  | VALVE                |
|  | HOSE BIB             |
|  | WATER SUPPLY         |
|  | SUSPENDED GAS HEATER |

## MISC

- |  |                            |
|--|----------------------------|
|  | BOLLARD                    |
|  | 11'-4-11/16 SPOT ELEVATION |



### INTERIOR ELEVATIONS



### BUILDING SECTION

### PHOTO DOCUMENTATION LEGEND

- INDICATES LOCATION OF CAMERA
- INDICATES DIRECTION OF CAMERA LENS AND CORRESPONDING PHOTO / VIDEO NUMBER

#### TYPES OF DOCUMENTATION

- |  |                    |  |                    |  |                      |  |                    |  |                    |
|--|--------------------|--|--------------------|--|----------------------|--|--------------------|--|--------------------|
|  | GROUND BASED PHOTO |  | GROUND BASED VIDEO |  | 360° SPHERICAL PHOTO |  | AERIAL BASED PHOTO |  | AERIAL BASED VIDEO |
|--|--------------------|--|--------------------|--|----------------------|--|--------------------|--|--------------------|

**ARCHITECTURAL AS BUILT**  
**Melrose Park, IL**

01 100% SUBMISSION SEE COVER SHEET

NO. ISSUES | REVISIONS DATE

SHEET TITLE

HL PROJECT MANAGER

HL PROJECT DIRECTOR

- PROJECT NUMBER

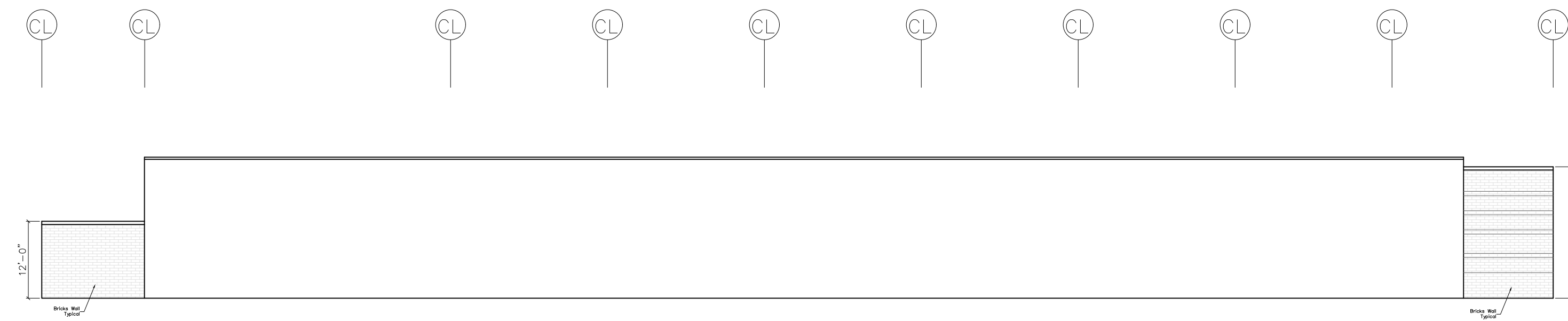
AS NOTED SCALE

CL DRAWN BY

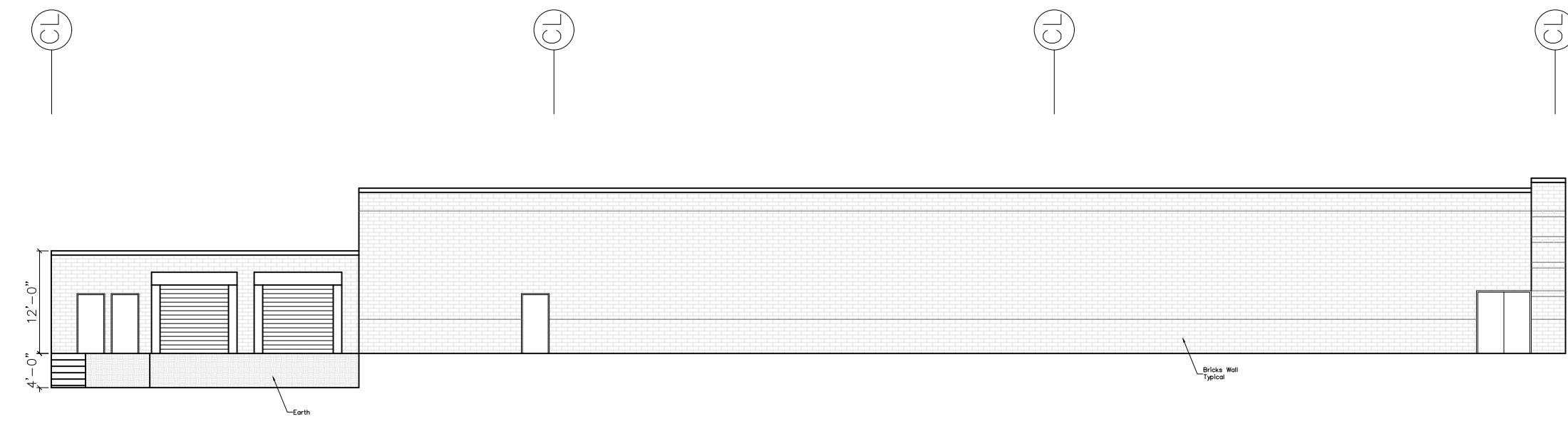
SHEET NUMBER

**SL**

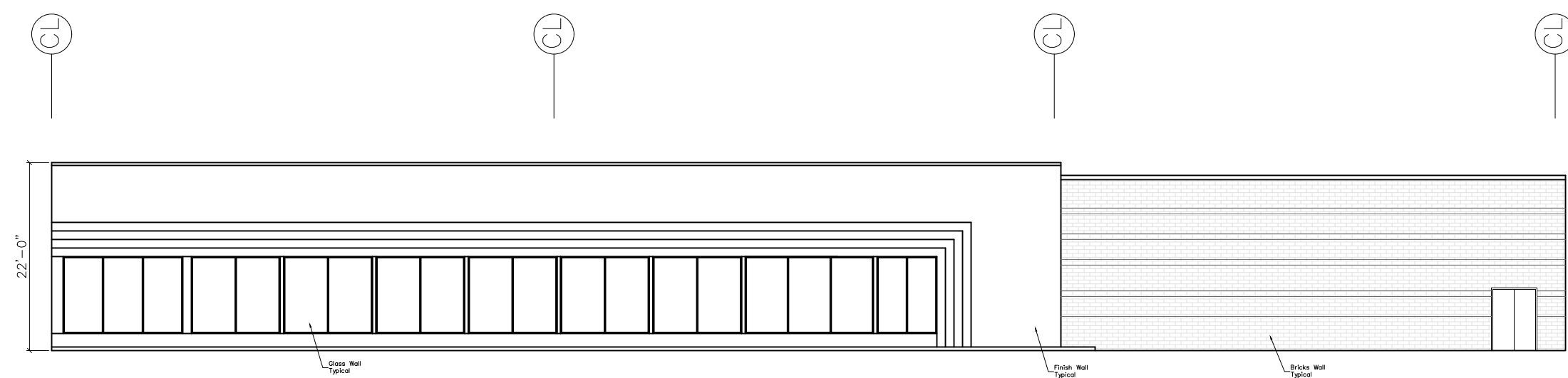
**ARCHITECTURAL AS BUILT**  
**Melrose Park, IL**



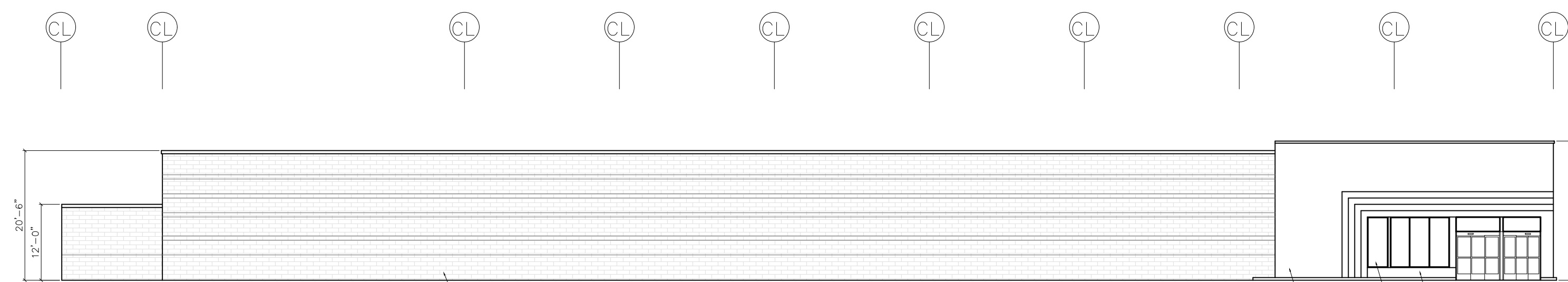
REAR ELEVATION  
 SCALE 1/16" = 1'-0"



LEFT SIDE ELEVATION  
 SCALE 1/16" = 1'-0"



RIGHT SIDE ELEVATION  
 SCALE 1/16" = 1'-0"

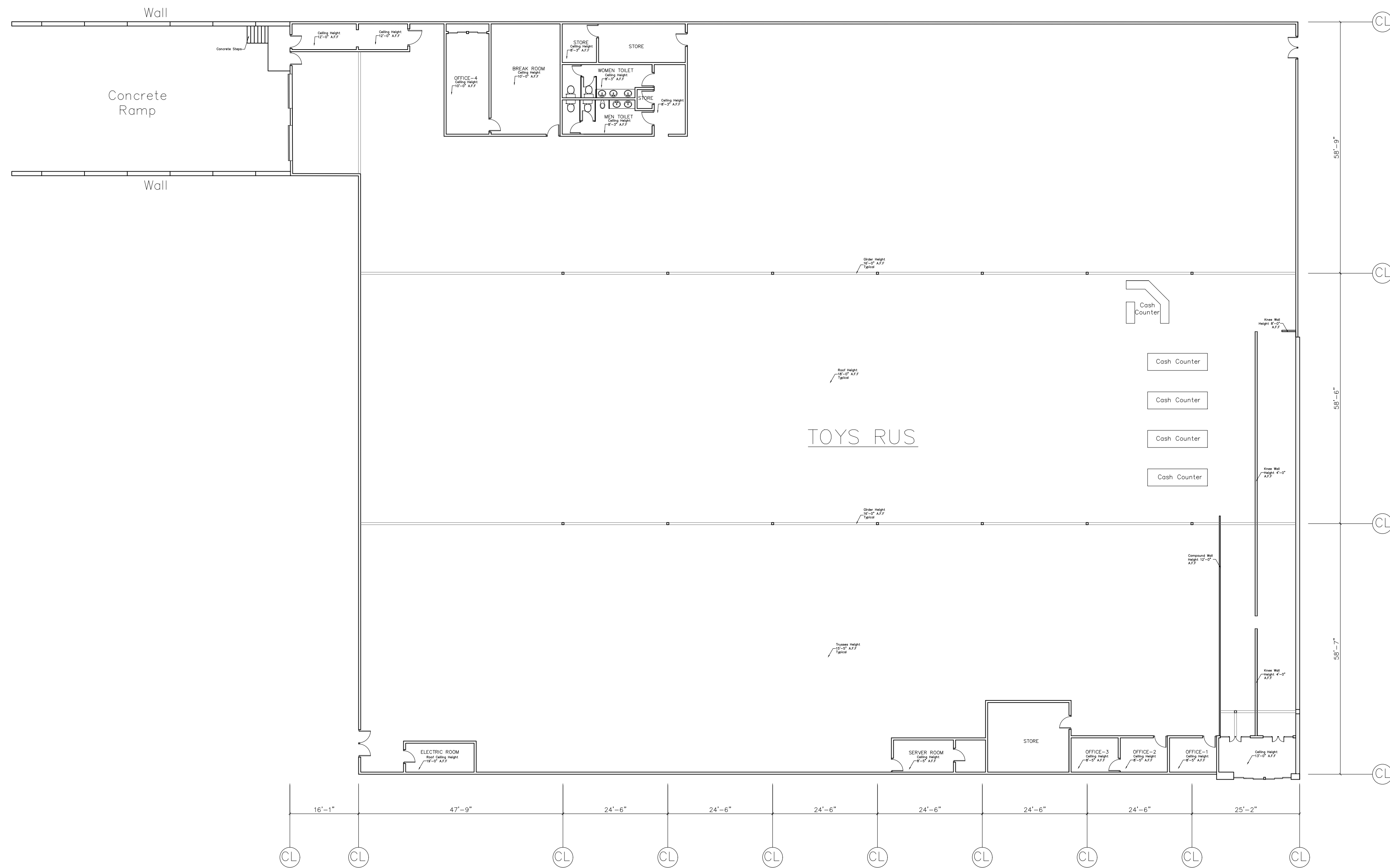


FRONT ELEVATION  
 SCALE 1/16" = 1'-0"

01	100% SUBMISSION	SEE COVER SHEET
NO.	ISSUES   REVISIONS	DATE
SHEET TITLE		

HL	PROJECT MANAGER
HL	PROJECT DIRECTOR
-	PROJECT NUMBER
AS NOTED	SCALE
CL	DRAWN BY
	SHEET NUMBER

**ARCHITECTURAL AS BUILT**  
**Melrose Park, IL**



MAIN FLOOR PLAN  
SCALE 1/16" = 1'-0"

01	100% SUBMISSION	SEE COVER SHEET
NO.	ISSUES   REVISIONS	DATE
		SHEET TITLE

HL	PROJECT MANAGER
HL	PROJECT DIRECTOR
-	PROJECT NUMBER
AS NOTED	SCALE
CL	DRAWN BY
	SHEET NUMBER